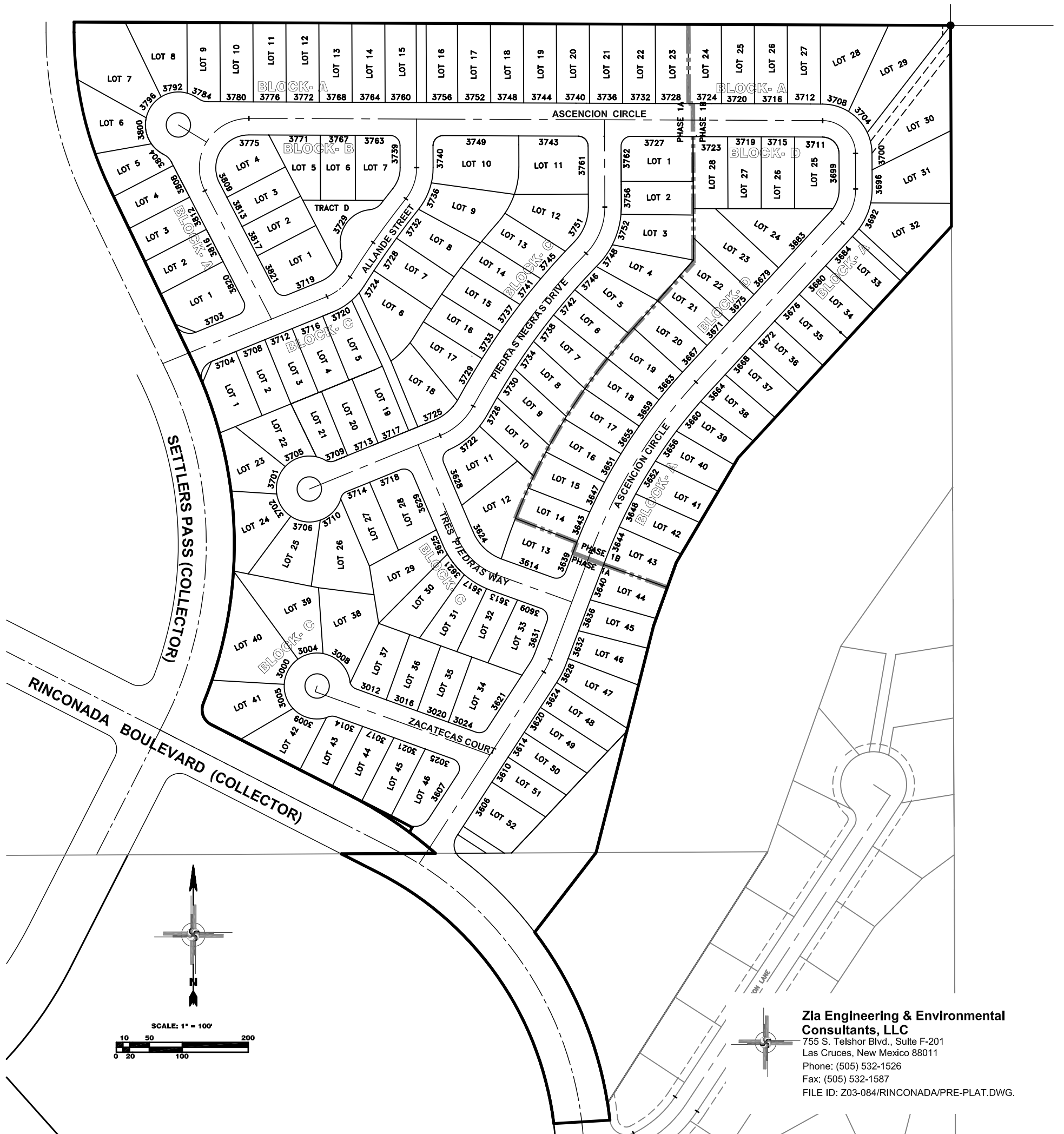


HIGH DESERT SUBDIVISION PHASES 1A AND 1B- ADDRESS PLAT

BEING A REPLAT OF PARCELS 1 AND 4 OF THE RINCONADA CENTRO SUBDIVISION,
RECORDED 12/02/02, PLAT RECORD 20, PAGES 218-219, AND A PORTION OF SANDHILL VILLAGE
UNIT 1, RECORDED 03/04/93, PLAT RECORD 17, PAGE 284, DONA ANA COUNTY RECORDS,
LOCATED WITHIN SECTION 29, T.22S., R2E., N.M.P.M. OF THE U.S.G.L.O. SURVEYS,
CITY OF LAS CRUCES, DONA ANA COUNTY, NEW MEXICO
MARCH 17, 2005



**Zia Engineering & Environmental
Consultants, LLC**
755 S. Telshor Blvd., Suite F-201
Las Cruces, New Mexico 88011
Phone: (505) 532-1526
Fax: (505) 532-1587
FILE ID: Z03-084/RINCONADA/PRE-PLAT.DWG.